



MONTHLY MEMBERSHIP PROGRESS REPORT

District 29 I

Results as of: 03/31/2018

GMT: CINDY GREGG

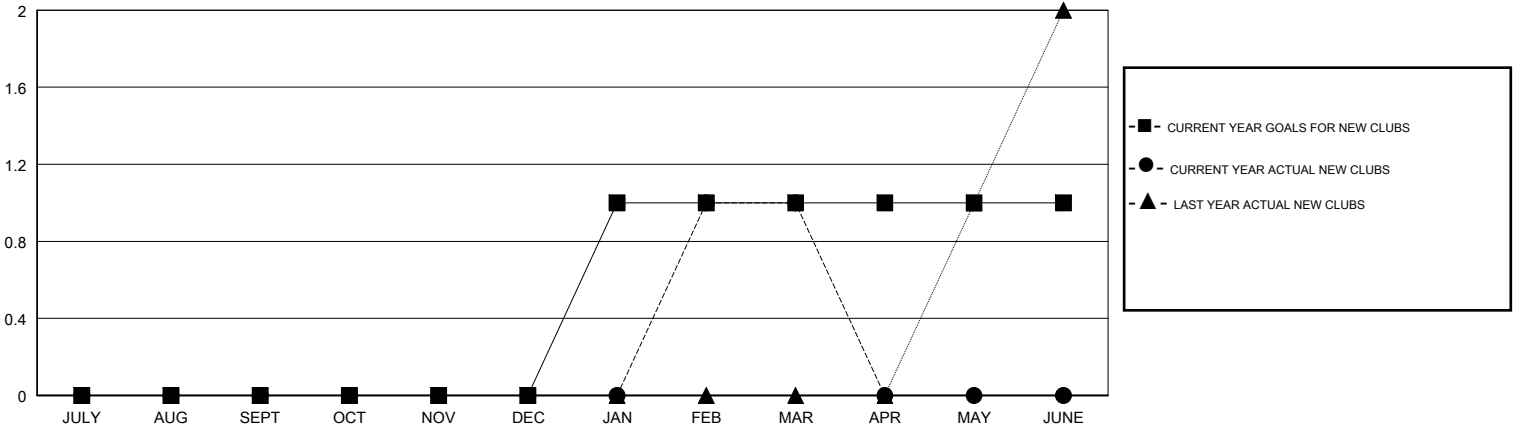
LOCATION WEST VIRGINIA

GMT CA

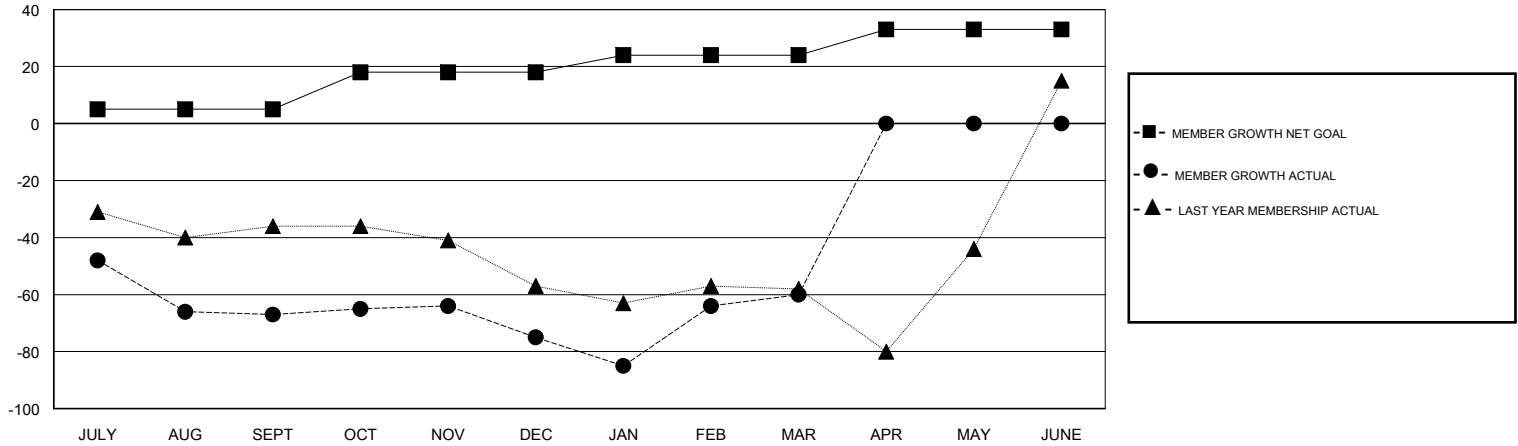
Clubs			
RESULTS FOR 2017-2018			
QUARTER	NEW CLUB GOAL	NEW CLUBS	DROPPED CLUBS
JULY/AUG/SEPT	0	0	0
OCT/NOV/DEC	0	0	0
JAN/FEB/MAR	1	1	0
APR/MAY/JUNE	0	0	0

Members			
RESULTS FOR 2017-2018			
QUARTER	MEMBER GROWTH NET GOAL	MEMBER GROWTH ACTUAL	DROPPED MEMBERS ACTUAL (including transfers)
JULY/AUG/SEPT	5	20	83
OCT/NOV/DEC	13	28	32
JAN/FEB/MAR	6	48	30
APR/MAY/JUNE	9	0	0

GOALS AND ACTUAL NEW CLUBS CUMULATIVE



GOALS AND ACTUAL MEMBERS CUMULATIVE



DROPPED CLUBS: 0	29 CLUBS OF 56 ADDED 1 OR MORE NEW MEMBERS	<u>GENDER DISTRIBUTION</u>	
DROPPED MEMBERS		MALE	1,037 (65.43%)
DECEASED	21	FEMALE	548 (34.57%)
CLUB CANCELLED	0	Women Percentage Fiscal Year Goal: 35%	
OTHER	124	CLICK HERE FOR CUMULATIVE MEMBERSHIP DATA	
TOTAL	145	TOTAL FAMILY UNIT MEMBERS	468
		FAMILY MEMBERS PAYING HALF DUES	237